



## Sumatra WBTsuite

An important aspect regarding use of new media and E-Learning (learning through the network) is the availability of target group specific content.

While it was not easy nor cost effective to develop such educational content in the past, things have changed today. With current software tools the development can be carried out even by users in the companies.

**Sumatra WBTsuite** is an ideal tool for both the professional developer as well as for the domain expert within an organisation. The system helps you to develop educational content in the form of WBTs (Web Based Trainings). WBTs can be either launched from Intranet or Internet (depending on configurations). The development of a WBT has been simplified in such way that it is as simple as use of MS Powerpoint. For the development of the pages of your WBT you can choose among several designs or design your own.

On every page you can embed elements such as Images, Flash, Java Applet and other Media (Videos, Audios) in addition to text. Similar to Powerpoint you can define transition effects for pages or define action settings.

**Sumatra WBTsuite** offers you as well the ability to create assessments (tests). Every assessment can contain one or several learning objectives. You can create an unlimited number of interactions per learning objective.

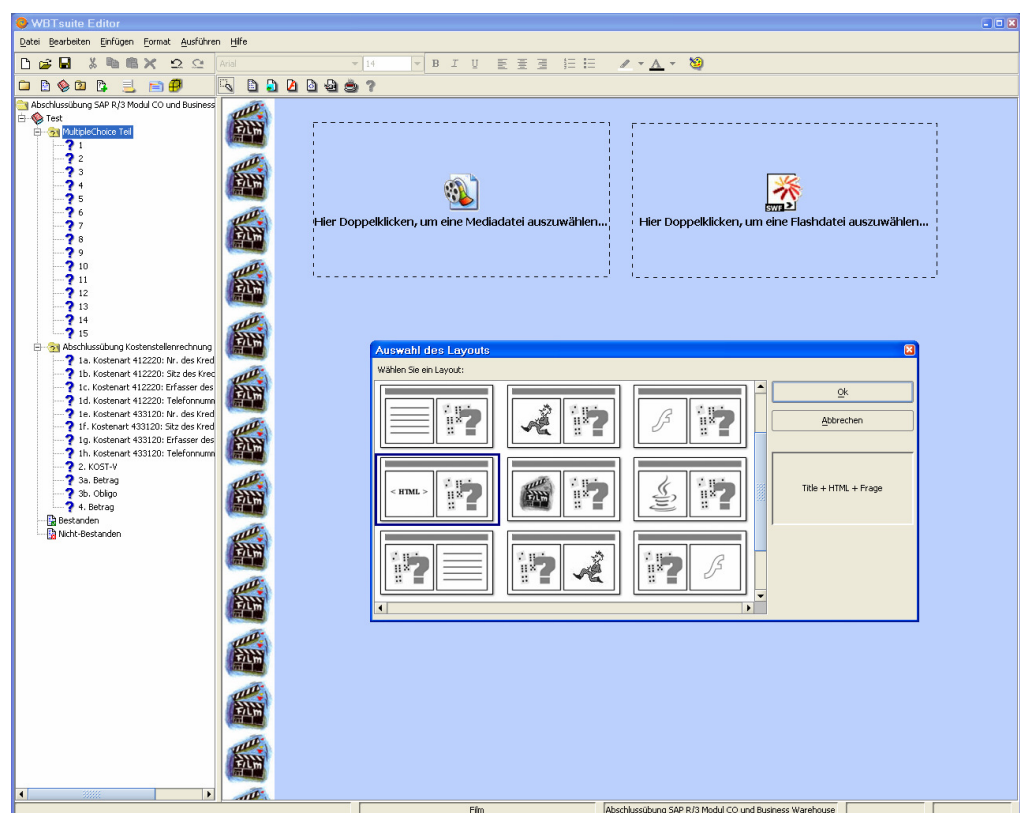
Every learning objective can be customized (options). Possible parameters are i.e. a random choice of interactions

(question pooling) or the number of points that the learner has to obtain in order to pass the learning objective.

Every interaction is defined with question, answers, reachable points and the desired interaction type. There are several interaction types available like true/false, choice, fill-in, assignment, sequence (order), likert and

numerical input. The software can be installed on a local PC and does not need an administrator privilege.

When you have finished the WBT all components of the course are compiled into a digital package that conforms to the international E-Learning standard **SCORM** and is uploaded to a server from where it can be launched.



## Functional Overview

### WBT components

A WBT can consist of Pages, Folders, Assessments, Learning Objectives, and Interactions.

### Format of the WBT

The system generates HTML pages that can be used in the current Web Browsers (Microsoft IE, Mozilla Firefox).

### Design

Every WBT can rely upon

existing designs (backgrounds, colours). Per page you can choose a layout from a palette of predefined page layouts.

### Local Development

WBTs can be developed and tested under all popular operating systems such as MS Windows NT/2K/XP, Linux or Mac OS X.

### LMS Integration

WBTs developed with **Sumatra**

**WBTsuite** can be directly integrated via SCORM content package into the Learning Management System (LMS) of your organisation.

### Communication with the LMS

The WBTs developed with **Sumatra WBTsuite** communicate with the LMS using the SCORM runtime data model to exchange learner data, results, bookmarks etc.

***Sumatra WBTsuite** helps you to develop and test WBTs in record time. And they are fully compatible with Learning Management Systems (LMS).*